

EMMANUEL COMMUNITY UNITED METHODIST CHURCH

N84 W16707 Menomonee Avenue, Menomonee Falls, WI

Church Office Hours: Monday -Thursday, 9 AM-1 PM Church@ec-umc.com

262-251-3830 www.ec-umc.com

Rev. Dr. Matt Hadley, MattH@ec-umc.com

Children's Ministries Director: Liz Cannon, LizC@ec-umc.com

Youth Ministries Director: Anna Schoenenberger, AnnaS@ec-umc.com

Music Director: Bill Follmann, BillF@ec-umc.com

Adult Discipleship: Janet Ray, JanetR@ec-umc.com

Organist/Accompanist: Abbey Harkins; AbbeyHarkins@gmail.com



Community News

YOUTH TRIVIA, 1/11

The next Youth Group event will be Sunday, January 11, from 2:30 PM - 4:30 PM in the Youth Room.

It's the inaugural Youth Group Trivia Challenge!

You'll participate in teams (so start brainstorming those clever trivia team names now!) and test your general and Bible knowledge. Prizes and plenty of snacks!



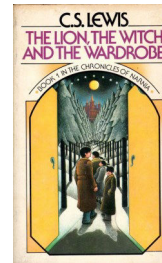
VISITING NARNIA - WOMEN'S WEDNESDAY STUDY

January 14 – February 11, 7-8:30 PM

Join Women's Ministry for a 5-week study of C.S. Lewis's *The Lion, the Witch, and the Wardrobe*.

Each week, we'll explore several chapters from this beloved classic—rich with adventure, mystery, and meaning in the magical land of Narnia. We'll also learn about the life of C.S. Lewis and how his faith and experiences shaped his writing.

The study will conclude with a showing of the movie and pizza on our last evening, 2/11, starting at 6 PM. Please sign up on the bulletin board or using the link in January's *Pathways*.



YOUTH WINTER RETREAT, 1/23-25

The Winter Youth Retreat at Lake Lucerne is coming up from January 23-25. Each Youth will be responsible for paying \$50 of the total cost, with ECUMC paying the remainder.



When you register, please indicate that ECUMC will be paying your fee. You will then submit your \$50 payment to Anna Schoenenberger via check made out to ECUMC. Sign-up here:



EMMANUEL COMMUNITY UNITED METHODIST CHURCH

N84 W16707 Menomonee Avenue, Menomonee Falls, WI

Church Office Hours: Monday -Thursday, 9 AM-1 PM Church@ec-umc.com

262-251-3830 www.ec-umc.com

Rev. Dr. Matt Hadley, MattH@ec-umc.com

Children's Ministries Director: Liz Cannon, LizC@ec-umc.com

Youth Ministries Director: Anna Schoenenberger, AnnaS@ec-umc.com

Music Director: Bill Follmann, BillF@ec-umc.com

Adult Discipleship: Janet Ray, JanetR@ec-umc.com

Organist/Accompanist: Abbey Harkins; AbbeyHarkins@gmail.com



Community News

YOUTH TRIVIA, 1/11

The next Youth Group event will be Sunday, January 11, from 2:30 PM - 4:30 PM in the Youth Room.

It's the inaugural Youth Group Trivia Challenge!

You'll participate in teams (so start brainstorming those clever trivia team names now!) and test your general and Bible knowledge. Prizes and plenty of snacks!



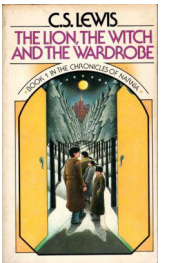
VISITING NARNIA - WOMEN'S WEDNESDAY STUDY

January 14 – February 11, 7-8:30 PM

Join Women's Ministry for a 5-week study of C.S. Lewis's *The Lion, the Witch, and the Wardrobe*.

Each week, we'll explore several chapters from this beloved classic—rich with adventure, mystery, and meaning in the magical land of Narnia. We'll also learn about the life of C.S. Lewis and how his faith and experiences shaped his writing.

The study will conclude with a showing of the movie and pizza on our last evening, 2/11, starting at 6 PM. Please sign up on the bulletin board or using the link in January's *Pathways*.



YOUTH WINTER RETREAT, 1/23-25

The Winter Youth Retreat at Lake Lucerne is coming up from January 23-25. Each Youth will be responsible for paying \$50 of the total cost, with ECUMC paying the remainder.



When you register, please indicate that ECUMC will be paying your fee. You will then submit your \$50 payment to Anna Schoenenberger via check made out to ECUMC. Sign-up here:



HOLIDAY COMMUNICATION UPDATE

The Church Office is closed for Christmas and New Year's on the following days:

Wednesday, 12/31/25 – Thursday, 1/1/26 – Friday, 1/2/26

There will be no eNews on Monday, 12/29/25

2026 FLOWER CHART SIGN UP

Do you know about the flower chart hanging in the Narthex? It lists every Sunday for 2026. You can sign up to bring altar flowers any week.

Why donate flowers?

- 1) Choose a meaningful date to remember or honor a loved one or a special occasion.
- 2) Help beautify our worship spaces. Your plant or cut flower arrangement is moved to Celebration Hall after the Sanctuary service and may be taken home at 11 AM.



GIVING STATEMENTS/OFFERING ENVELOPES

Gift statements for 2025 will be sent out the first week of January. If you itemize for tax purposes this is the statement to use. Pledge envelopes are outside the church office, arranged alphabetically by last name.

If you give to the church through the website or electronic fund transfer, you will not receive pledge envelopes. If you need an envelope, for there are extras in the pew back. (Please be sure to include your name on the envelopes.)

If you have any questions please contact Anna Thompson, Financial Secretary at 320-309-2003 or Annabthomp@gmail.com



ALL are Welcome!

This is a Welcoming, Reconciling Congregation.

Therefore, we embrace diversity and affirm the dignity and worth of every person because we are all created by a loving God.

We believe we can all love alike, even if we don't think alike.

We invite all to share in the life, leadership, lay and ordained ministry, worship and sacraments, the covenant of committed love in holy matrimony, fellowship, blessings, and joys of our congregation as we seek to grow in faith and love.

No matter where you are on your faith journey, you are welcome here.



HOLIDAY COMMUNICATION UPDATE

The Church Office is closed for Christmas and New Year's on the following days:

Wednesday, 12/31/25 – Thursday, 1/1/26 – Friday, 1/2/26

There will be no eNews on Monday, 12/29/25.

2026 FLOWER CHART SIGN UP

Do you know about the flower chart hanging in the Narthex? It lists every Sunday for 2026. You can sign up to bring altar flowers any week.

Why donate flowers?

- 1) Choose a meaningful date to remember or honor a loved one or a special occasion.
- 2) Help beautify our worship spaces. Your plant or cut flower arrangement is moved to Celebration Hall after the Sanctuary service and may be taken home at 11 AM.



GIVING STATEMENTS/OFFERING ENVELOPES

Gift statements for 2025 will be sent out the first week of January. If you itemize for tax purposes this is the statement to use. Pledge envelopes are outside the church office, arranged alphabetically by last name.

If you give to the church through the website or electronic fund transfer, you will not receive pledge envelopes. If you need an envelope, for there are extras in the pew back. (Please be sure to include your name on the envelopes.)

If you have any questions please contact Anna Thompson, Financial Secretary at 320-309-2003 or Annabthomp@gmail.com



ALL are Welcome!

This is a Welcoming, Reconciling Congregation.

Therefore, we embrace diversity and affirm the dignity and worth of every person because we are all created by a loving God.

We believe we can all love alike, even if we don't think alike.

We invite all to share in the life, leadership, lay and ordained ministry, worship and sacraments, the covenant of committed love in holy matrimony, fellowship, blessings, and joys of our congregation as we seek to grow in faith and love.

No matter where you are on your faith journey, you are welcome here.

